

Brief Introduction

What is DC Geared Motor:

The DC Geared motor means a DC motor added by a gearbox. People might feel problem that either the DC motor speed is too much high, or the torque is not enough. Then, adding a gearbox to reduce the speed and increase the torque becomes an ideal and direct solution. This is DC Geared Motor.

How to Select An Ideal DC Motor:

1. Good electrical & mechanical performance, consistency, correspondence & reliability are the first consideration for mass production.
2. Because of the compact size and using of brush, the motor ideal speed should be during 3000 to 6000rpm. Speed increasing would lead to lifetime decreasing evidently.
3. Adopting high precision & low noise motor, adding varistor and / or capacitors to the motor would help to reduce the electromagnetism interference (EMI) a lot.
4. Motor lifetime depends on the mechanical wear & tear and electrochemical eroding of brush to commutator for the brushed DC motor. At the max. permitted torque and speed to run the motor, the motor lifetime is about 300-500 hours.
5. Loaded torque has direct relationship with the speed & current. Torque increasing would lead to speed decreasing and current increasing linearly. So, when we make a selection, we would try to select the specifications to be as much as close to the specifications at max. efficiency point as possible. Thus the performance, lifetime and stability of the motor would be ideal.

Main Features of the Gearbox:

1. Lifetime of gears would be about 1,000 to 3,000 hours normally.
2. Gear reduction ratio is normally in the range of 1:10 ~ 1:500. It could reach 1:1000 or even more after special design. But the high reduction ratio motors are not permitted to turn backward.
3. For the detailed features, pls see the last page of "To Find Out More Reasons Why Our Geared Motors Are Simply Better".

Main Features of the Small Size Spur Geared DC Motors:

Voltage is from 1.5V to 24VDC, power is less than 15W, speed can be from 0.01rpm to 1000rpm, and torque can reach 30Kgf.cm as needed.

Denomination Explanation:

12 GA 030-09120 - 60

Reduction Ratio. "60" means 1:60

Motor model No. A lot of different models can be selected.

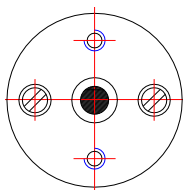
"GA": Geared Motor with centric output spindle & round gearbox

"GB": Geared Motor with eccentric output spindle & round gearbox

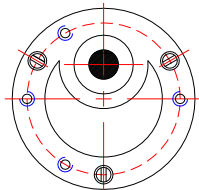
"GE": Geared Motor with eccentric output spindle & pear or ellipse gearbox

"GF": Geared Motor with eccentric output spindle & quare or rectangle gearbox

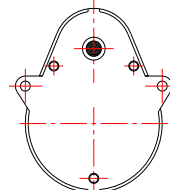
Gearbox max. diameter or width in millimeter



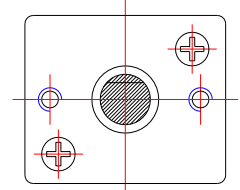
GA Type of Gearbox



GB Type of Gearbox



GE Type of Gearbox



GF Type of Gearbox

Nostop Motor Group Headquarters

No.15, Jinhui Road, National Hi-tech Zone, Jianghai District, Jiangmen City, Guangdong Province, 529020 P.R.China

Tel: +86.750. 2635 678 (Technical), 2635 680 (Export) Fax: +86.750.2635 777 www.nostopmotor.com E-mail: stony@nostopmotor.com